

Pharma Software

Training Program 2026

Our comprehensive PAS-X trainings ensure the success of your MES projects in the pharma, biotech, and cell & gene therapy industries



Content

Contact	03
Academy	04
From Key User to End User training	05
Digital training platform	06
Key User specific training	07
How PAS-X Trainings support you on your migration journey	08
Tailored End User training	09
PAS-X MES training program 2026	
PAS-X MES Key user trainings	10
PAS-X MES Additional trainings	31
PAS-X MES End user trainings	37
Instructor-led training schedule	
Americas	42
Asia	43
Europe	44
Your PAS-X MES training team	46
Our locations	51



Contact

koerber-pharma.com/en/services/academy

Europe



Sarah Zimmer
Head of Business Consulting

T +49 4131 8900-347
Location: Lüneburg, Germany
academy-europe.ph.software@koerber.com

Americas



Kristi Korson
Head of Training

T +1 973 995 7447
Location: Apex, USA
academy.ph.software.e-learning@koerber.com

Asia



Sariya Dechamethakun (Gig)
Consultant & Trainer

T +66 2 02057 20 302
Location: Bangkok, Thailand
academy-asia.ph.software@koerber.com

Registration & information

Would you like to learn more about our training offerings? Do you have questions about a specific course, or would you like to book a training promptly? Feel free to contact us directly, providing details of your training interest.

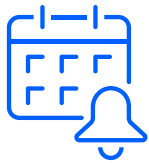
Training when and where you need it

Are you interested in digital learning formats and want to start right away? Our Academy offers a wide range of interactive e-learning and remote trainer-led courses at your fingertips. In addition, the learning platform provides helpful study guides and learning materials that effectively support your learning progress.

Academy

Training anywhere you need it

Whatever your need, whether you are just starting your MES project or you are ready to advance to the next level, we support you with a suitable training approach. We offer Instructor-led Training, E-Learning and Blended Learning for a variety of roles.



Instructor-led Training

Open Classroom

Standard trainings are held at one of our locations or remotely on a fixed date and time. Single seats can be booked, providing a financial benefit if you want to train fewer than 4 employees.

⇒ [Jump to Training schedules](#)

On-site training

Are you looking to train a group of employees? We deliver the training at your location or remotely. Together we will find a schedule that fits your team.



Interactive E-learning

Interactive digital training that can be flexibly integrated into your daily work routine, no travel necessary.



Blended Learning

Combine the benefits of both learning worlds by gathering theoretical knowledge through e-learning and then efficiently developing deeper understanding in a remote instructor-led training.

Our training courses are certifiable, which means that every participant in a training course will take an exam at the end to ensure that the content taught has been understood. Each successful exam is confirmed with a certificate.



We herewith confirm that
John Doe

has successfully participated in the training PAS-X MES Basic

This certificate is personalized, not transferable and only valid for the respective trained PAS-X Version and expires 24 months after the date of issue.

Contents of this training:

- PAS-X Concept & User Interface
- Central Login
- Master Data Management
 - Equipment
 - Material
- Master Batch Records
 - MBR Designer
 - System Libraries
 - Material Flow
 - Use of Equipment
- Electronic Batch Recording
 - Exception Handling
 - Batch Record Review & Release

Körber Pharma Software GmbH

Lüneburg, 22/11/2023

Certificate

From Key User to End User training

+3.500 people trained globally (2025)

Our training methods are tailored to individual learning targets.

Key User – Personnel tasked to implement, configure, design and set up of PAS-X MES

End User – Personnel tasked to operate the system in their daily work based on the Key User's setup

Based on your role, individual learning paths are laid out, preparing you and your team to work with PAS-X MES in your specialized areas.



– Key Users

Basic training

Start your training journey by learning about the functions and capabilities that PAS-X MES has to offer and train your team on all the fundamentals.



– Key Users

Professional training Administration training

Enable your Key Users with advanced PAS-X MES knowledge and experience to implement complex use cases and scenarios in your system, whether it is MBR Design, Master Data or other configurations.



– End Users

Tailored training

Adapted training concept based on your manufacturing processes to ensure hands-on preparation of End Users for a smooth go-live.



PAS-X Version update / Refresher trainings

Digital training platform

academy.koerber-pharma.com

The screenshot shows the desktop interface of the digital training platform. At the top, there is a blue navigation bar with the KOERBER logo, a search bar, and a user profile icon labeled 'JB'. Below the navigation bar, there are tabs for 'My Courses', 'My Live Sessions', and 'Training History'. The main content area features a large blue banner with the text 'Welcome to the Academy' and a 'Course catalogue' button. To the right of the banner is a video player showing a presentation slide titled 'The Academy - the digital learning platform...'. Below the banner, there is a 'Total Number of Courses' section with four statistics: 9 Enrolled Courses, 0 Learning Journeys, 11 Completed Courses, and 1 Learning Paths. A featured course card for 'PAS-X V3.3.1 Basic (Blended Learning)' is displayed, showing it is completed and completed on 09 May 2023. At the bottom, there is a 'Recent Activity' section with a notification: 'You launched the course Creating Master Batch Records 6 days ago'.

Learn PAS-X
anywhere and
anytime



Key User specific training

PAS-X MES training

MBR Designer / MES Engineer

- Basic
- Minor Version Update
- Professional
 - Weighing & Dispensing
 - Material Flow
 - EQ Management
 - Library Elements & GMBR
 - Order Network & CX
 - Formulas
 - MBR Design
 - ERP Integration

System Administrator

- Basic¹
- System Administration
- Minor Version Update
- Monitoring

Label Designer

- Basic¹
- Reports & Labels Administration

Automation Engineer

- Basic
- SCADA Administration
- SCADA Professional MBR Design
- Professional MSI

Quality Manager

- Basic for QA
- Minor Version Update

Project Manager

- Basic
- Minor Version Update

Additional training

Track & Trace

- Basic
- Administration

Monitoring

- Monitoring

KPI

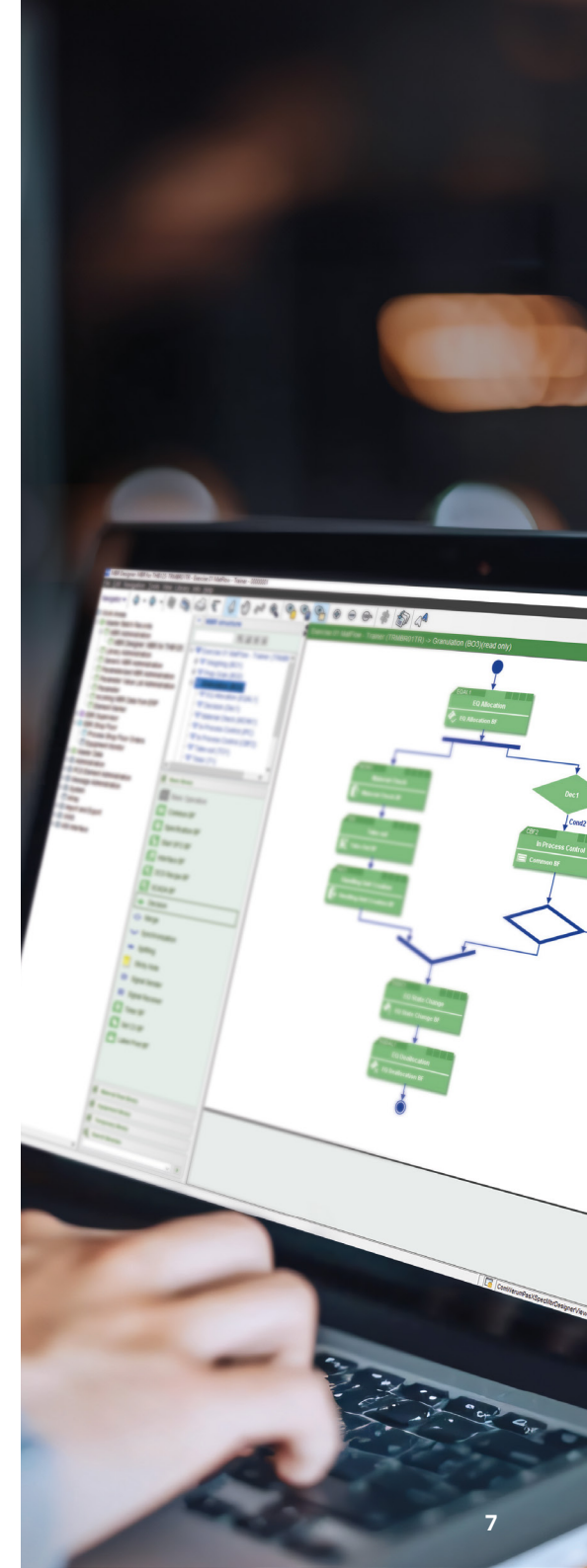
- Administration²

PAS-X Savvy

- Basic
- Administration
- Programming

Trainings for your PAS-X MES migration journey

- Version Update
- Version Update for MES Engineers
- Version Update for MES Engineers & System Administrators



How PAS-X Trainings support you on your migration journey

It is vital that your personnel is trained in new functionalities of PAS-X MES when migrating from your legacy MES. With our targeted update trainings every role from PM to MES Engineer and System Administrator will gain an understanding and is empowered to get the most out the new PAS-X MES.

Ideal for Project Managers

Available as instructor-led training (remote or onsite) & e-learning

Version Update Training

Get an overview of new and changed features and understand how you can benefit from them

[Go to course details \(TR-UP\)](#)

Ideal for MES Engineers and System Administrators

Available as instructor-led training (remote or onsite)

MES Engineer Version Update

Deep dive into the changes for Master Data, WMS, MBR Design, EBR and many more to get detailed insights on how to get the most out of the new version as an MES Engineer.

[Go to course details \(TR-MES-UP\)](#)

MES System Administrator Version Update

Learn about the changes for System Administration relevant changes like Rights Management, Printer setup, Service- and Scale-Configuration and ERP-Monitoring to efficiently administer PAS-X MES.

[Go to course details \(TR-MES-SA-UP\)](#)

Tailored End User training

Shop floor Operator
Manufacturing Supervisor
Shop floor QA

Do you wish for a smooth MES implementation and effective preparation of all employees?

We help you minimize production downtime by familiarizing your team with the system and preparing them accordingly for their tasks. This is how you ensure a successful start with PAS-X.

In our training courses, we link the basic understanding of the system and its functions to the tasks to be performed, reflecting customer-specific processes and production steps. Therefore, we offer training courses that are individually tailored to your needs, designed to fit your production processes.

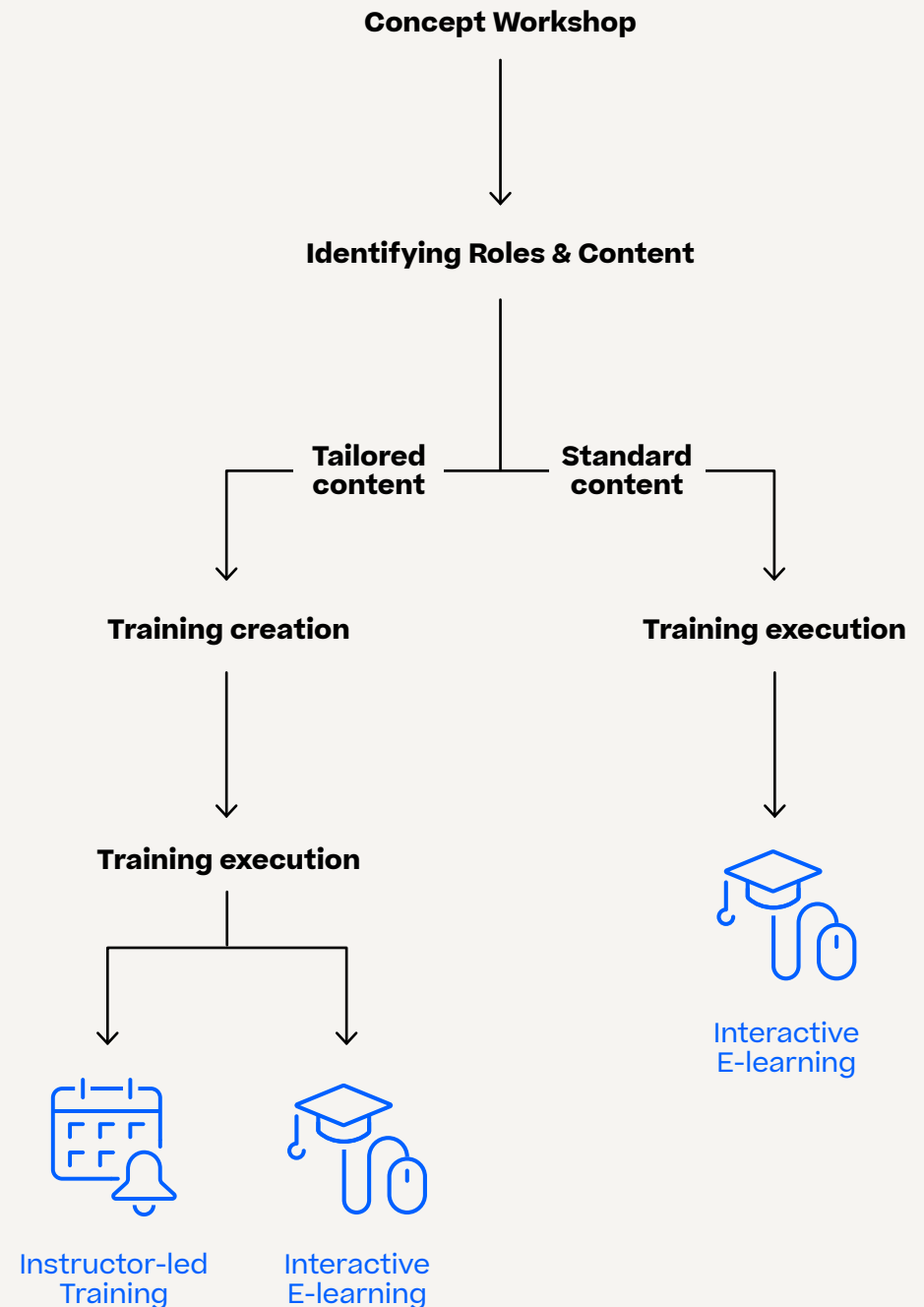
While tailored content deepens the users understanding it is also not always necessary. In that case you can train the end users with our ready to use standardized courses. The execution via e-learning saves you valuable time and resources. The end users can

study PAS-X within their own pace and integrate the learning easily into their daily business.

Would you like to train your employees yourself?

We also support you in conducting training for your end users with our train-the-trainer approach. In these, key users are enabled to conduct the training themselves for all relevant team members. Of course, we can also take care of the end-user training for you.

However, you choose, a workshop to assess your needs and determine the scope of training is the starting point for tailored training, followed by close collaboration between your team and our trainers. Together, we develop the appropriate training program and materials.



PAS-X MES

Key user trainings

Key User – Personnel tasked to implement, configure, design and set up of PAS-X MES

Available as



Recommended training for

- MBR Designer
- MES Engineer
- Automation Engineer
- Project Manager

PAS-X MES Basic		TR-BAS
Training objectives	<ul style="list-style-type: none"> • General knowledge of and skills in using PAS-X MES, modeling processes and executing the main system functionalities • Overview of PAS-X MES functionalities covering the whole production process 	
Target audience	Users and administrators of the PAS-X system, project manager and key users as supervisors, team leaders, quality personnel, head of production	
Required qualifications	None	
Required equipment	Laptop	
Duration	3 days /09:00 a.m. – 05:00 p.m.	
Language	English	
Certification valid for	2 years	
Training content	<p>PAS-X MES concept</p> <ul style="list-style-type: none"> • PAS-X MES product concept <p>User interface</p> <ul style="list-style-type: none"> • Overview of the general structure of the user interface • Dialogs & forms • Use of filters <p>Master data management</p> <ul style="list-style-type: none"> • Equipment management & material master data <p>Master Batch Record – management</p> <ul style="list-style-type: none"> • Concept and structure • Basic recipe • MBR designer • Creating recipes • Bill of material • Material flow concept & use of equipment 	<p>Master Batch Record – release workflow</p> <p>Electronic Batch Recording – EBR</p> <ul style="list-style-type: none"> • Order Management • Recipe execution • Exception handling <p>Batch Record Review</p> <ul style="list-style-type: none"> • Exception Review • Review of critical parameters • Batch Record release

Available as



Recommended training for

- Quality Manager

PAS-X MES Basic for QA		TR-BAS-QA
Training objectives	<ul style="list-style-type: none"> • Detailed knowledge of and skills in using PAS-X for QA purposes • Using PAS-X in real-life scenarios 	
Target audience	Key users as quality managers, supervisors and head of production.	
Required qualifications	mandatory	optional
	-	-
Required equipment	Laptop	
Duration	2 days /09:00 a.m. – 05:00 p.m.	
Language	English	
Certification valid for	2 years	
Training content	<p>Quality Assurance with PAS-X</p> <ul style="list-style-type: none"> • Life cycle management of master batch records • Critical parameters • Exception handling • Review by Excpetion • Batch record review & approval • Archiving of batch record reports • Batch quality attributes 	

Available as



Recommended training for

- MBR Designer
- MES Engineer

PAS-X MES Professional Weighing & Dispensing		TR-PRO-WD		
Training objectives	<ul style="list-style-type: none"> • Detailed knowledge of and skills in weighing and dispensing of materials in the context of the MBR modeling and EBR execution process • Usage of PAS-X MES in real life scenarios 			
Target audience	Key users as recipe designers, supervisors and team leaders.			
Required qualifications	mandatory	optional		
	Basic training	–		
Required equipment	Laptop			
Duration	1 day / 09:00 a.m. – 05:00 p.m.			
Language	English			
Certification valid for	2 years			
Training content	<table border="0" style="width: 100%;"> <tr> <td style="vertical-align: top; width: 50%;"> <p>Weighing recipe & administration</p> <ul style="list-style-type: none"> • Bill of material • Container Management • Weighing configuration <p>Weighing preparation</p> <ul style="list-style-type: none"> • Prepare production • Shop floor order dialog • Material item setting </td> <td style="vertical-align: top; width: 50%;"> <p>Weighing recipe execution</p> <ul style="list-style-type: none"> • Different weighing modes • Manual take-out • Weighing procedures • Material takeouts • Yield weighing <p>Post-weighing activities</p> <ul style="list-style-type: none"> • Inventory adjustment • Takeout log information • Managing material returns & losses </td> </tr> </table>		<p>Weighing recipe & administration</p> <ul style="list-style-type: none"> • Bill of material • Container Management • Weighing configuration <p>Weighing preparation</p> <ul style="list-style-type: none"> • Prepare production • Shop floor order dialog • Material item setting 	<p>Weighing recipe execution</p> <ul style="list-style-type: none"> • Different weighing modes • Manual take-out • Weighing procedures • Material takeouts • Yield weighing <p>Post-weighing activities</p> <ul style="list-style-type: none"> • Inventory adjustment • Takeout log information • Managing material returns & losses
<p>Weighing recipe & administration</p> <ul style="list-style-type: none"> • Bill of material • Container Management • Weighing configuration <p>Weighing preparation</p> <ul style="list-style-type: none"> • Prepare production • Shop floor order dialog • Material item setting 	<p>Weighing recipe execution</p> <ul style="list-style-type: none"> • Different weighing modes • Manual take-out • Weighing procedures • Material takeouts • Yield weighing <p>Post-weighing activities</p> <ul style="list-style-type: none"> • Inventory adjustment • Takeout log information • Managing material returns & losses 			

Available as



Recommended training for

- MBR Designer
- MES Engineer

PAS-X MES Professional Material Flow		TR-PRO-MATFLOW
Training objectives	<ul style="list-style-type: none"> • Detailed knowledge of and skills in using the material flow within PAS-X MES • Using PAS-X in real-life scenarios 	
Target audience	Key users as recipe designers, supervisors and team leaders.	
Required qualifications	mandatory	optional
	Basic training	Formula training
Required equipment	Laptop	
Duration	1 day / 09:00 a.m. – 05:00 p.m.	
Language	English	
Certification valid for	2 years	
Training content	<p>Material management</p> <ul style="list-style-type: none"> • Material master data • Handling unit management • Work in process material 	<p>Material flow within MBRs</p> <ul style="list-style-type: none"> • Design material flow • Material quantification types • Hand over material • Holding time • Automated material flow functions

Available as



Recommended training for

- MBR Designer
- MES Engineer

PAS-X MES Professional EQ Management		TR-PRO-EQM
Training objectives	<ul style="list-style-type: none"> • Detailed knowledge of and skills in configuring and using equipment as well as reusable equipment • Using PAS-X MES in real-life scenarios 	
Target audience	Key users as recipe designers, supervisors and team leaders.	
Required qualifications	mandatory	optional
	Basic training	Formula training
Required equipment	Laptop	
Duration	1 day / 09:00 a.m. – 05:00 p.m.	
Language	English	
Certification valid for	2 years	
Training content	<p>Equipment management</p> <ul style="list-style-type: none"> • Equipment concept • Equipment specific properties • Equipment cleaning rules • State diagrams • Equipment logbook 	<p>Equipment usage within Master Batch Record</p> <ul style="list-style-type: none"> • Using the equipment library • Creating ESPs • Defining equipment list • Automated equipment functions

Available as



Recommended training for

- MBR Designer
- MES Engineer

PAS-X MES Professional Library Element & GMBR		TR-PRO-GMBR
Training objectives	<ul style="list-style-type: none"> • Detailed knowledge of and skills in using GMBRs and libraries in the context of MBR modeling and EBR execution processes • Usage of PAS-X MES in real life scenarios 	
Target audience	Key users as recipe designers, supervisors and team leaders.	
Required qualifications	mandatory	optional
	Basic training	Formula training
Required equipment	Laptop	
Duration	1 day / 09:00 a.m. – 05:00 p.m.	
Language	English	
Certification valid for	2 years	
Training content	<p>Generic Master Batch Records</p> <ul style="list-style-type: none"> • Concept of generic master batch records • Parameterization of GMBRs • Managing parameter value lists • Defining global parameters • Life cycle management of GMBRs 	<p>Library administration</p> <ul style="list-style-type: none"> • Library concept • Creating libraries and library elements • Formula variable in library elements • Using library elements • Life cycle management of library elements

Available as



Recommended training for

- MBR Designer
- MES Engineer

PAS-X MES Professional Characteristics (CX)		TR-PRO-CX
Training objectives	<ul style="list-style-type: none"> • Detailed knowledge of and skills in setting up, configuring and using the characteristics functionality within PAS-X for propagating information between different manufacturing orders • Using PAS-X MES in real-life scenarios 	
Target audience	Key users as recipe designers, supervisors and team leaders.	
Required qualifications	mandatory	optional
	Basic training	–
Required equipment	Laptop	
Duration	1 day / 09:00 a.m. – 05:00 p.m.	
Language	English	
Certification valid for	2 years	
Training content	<p>Concept</p> <ul style="list-style-type: none"> • Concept of CX • Data propagation using CX <p>Administration of characteristics</p> <ul style="list-style-type: none"> • Defining characteristics (CX) • Managing CX for equipment and material • Maintaining characteristics 	<p>Usage of characteristics within recipes</p> <ul style="list-style-type: none"> • Parameterization of characteristics • Using of CX basic function • Using CX within activities <p>Recipe Execution using characteristics</p> <ul style="list-style-type: none"> • Writing characteristics to equipment • Reviewing characteristics

Available as



Recommended training for

- MBR Designer
- MES Engineer

PAS-X MES Professional Formulas		TR-PRO-FORM
Training objectives	<ul style="list-style-type: none"> • Detailed knowledge of and skills in using the formula editor in PAS-X • Using PAS-X MES in real-life scenarios 	
Target audience	Key users as recipe designers, supervisors and team leaders.	
Required qualifications	mandatory	optional
	Basic training	MBR design training
Required equipment	Laptop	
Duration	1 day / 09:00 a.m. – 05:00 p.m.	
Language	English	
Certification valid for	2 years	
Training content	<p>Managing Formulas</p> <ul style="list-style-type: none"> • Overview of formula editor • Formula verification in master batch record • Using formulas for different use cases • Formula simulation in batch execution 	

Available as



Recommended training for

- MBR Designer
- MES Engineer

PAS-X MES Professional MBR Design		TR-PRO-MBR		
Training objectives	<ul style="list-style-type: none"> • Specific knowledge on material flow design aspects as well as on event driven workflows • Detailed knowledge of and skills in using signal sender and signal receiver • Using PAS-X MES in real-life scenarios 			
Target audience	Key users as recipe designers, supervisors, team leaders and quality personnel.			
Required qualifications	mandatory	optional		
	Basic training	Formula training		
Required equipment	Laptop			
Duration	1 day / 09:00 a.m. – 05:00 p.m.			
Language	English			
Certification valid for	2 years			
Training content	<table border="0" style="width: 100%;"> <tr> <td style="vertical-align: top; width: 50%;"> <p>Master Batch Record</p> <ul style="list-style-type: none"> • Simulation tools • Recipe dependencies ERP / MES • Material flow design aspects based on factory layout • Workflow design for parallel, sequential or repeatable processes • Usage of the layer concept for structuring workflows • Specific design patterns </td> <td style="vertical-align: top; width: 50%;"> <p>Managing Signals</p> <ul style="list-style-type: none"> • Concept of signals • Signal buffering • Signal usage within workflow design <p>Complex processes</p> <ul style="list-style-type: none"> • Recommendations • Order Network </td> </tr> </table>		<p>Master Batch Record</p> <ul style="list-style-type: none"> • Simulation tools • Recipe dependencies ERP / MES • Material flow design aspects based on factory layout • Workflow design for parallel, sequential or repeatable processes • Usage of the layer concept for structuring workflows • Specific design patterns 	<p>Managing Signals</p> <ul style="list-style-type: none"> • Concept of signals • Signal buffering • Signal usage within workflow design <p>Complex processes</p> <ul style="list-style-type: none"> • Recommendations • Order Network
<p>Master Batch Record</p> <ul style="list-style-type: none"> • Simulation tools • Recipe dependencies ERP / MES • Material flow design aspects based on factory layout • Workflow design for parallel, sequential or repeatable processes • Usage of the layer concept for structuring workflows • Specific design patterns 	<p>Managing Signals</p> <ul style="list-style-type: none"> • Concept of signals • Signal buffering • Signal usage within workflow design <p>Complex processes</p> <ul style="list-style-type: none"> • Recommendations • Order Network 			

Available as



Recommended training for

- MBR Designer
- MES Engineer

**Available for
V3.3 and V3.4**

PAS-X MES Professional ERP Integration		TR-PRO-ERP
Training objectives	<ul style="list-style-type: none"> • Understanding the concept of the MES ERP interface • Understanding capabilities of utilizing the ERP interface • Gaining knowledge on the usage of ERP messages in PAS-X • Acquiring knowledge to efficiently troubleshooting failed messages in MES 	
Target audience	Key users as recipe designer, supervisors and team leaders	
Required qualifications	mandatory	optional
	Basic training	-
Required equipment	Laptop	
Duration	1 day / 09:00 a.m. – 05:00 p.m.	
Language	English	
Certification valid for	2 years	
Training content	<ul style="list-style-type: none"> • iDocs • Master Data • MBR Data • Batch Data/Stock • Process Orders • External Parameters • Notifications • Other Message Types 	

Available as



Recommended training for

- MBR Designer
- MES Engineer
- Automation Engineer

PAS-X MES SCADA Professional MBR Design		TR-PRO-SCADA
Training objectives	<ul style="list-style-type: none"> • Detailed knowledge of and skills in using PCS MBR elements • Using PAS-X in real-life scenarios 	
Target audience	Key users as recipe designers and automation engineers.	
Required qualifications	mandatory	optional
	Basic training	Formula training
Required equipment	Laptop	
Duration	1 day / 09:00 a.m. – 05:00 p.m.	
Language	English	
Certification valid for	2 years	
Training content	<p>SCADA (OPC) MBR Design</p> <ul style="list-style-type: none"> • Introduction to SCADA (OPC) Integration • Managing PCS MBR elements • Recipe design using PCS MBR elements • Using alias resolution within the recipe • Signal handling to drive recipe execution • Recipe execution with PCS MBR elements • Alarm & Event handling 	

Available as



Recommended training for

- MBR Designer
- MES Engineer

PAS-X MES Professional MSI		TR-PRO-MSI
Training objectives	<ul style="list-style-type: none"> • Setting up, configuring and maintaining the PAS-X MES client system as well as messages – the administrative perspective • Detailed knowledge of and skills in setting up and connecting PAS-X MES to external systems for automatic data exchange (SCADA, DCS, Smart EQM) • Using PAS-X MES in context of MSI in real-life scenarios 	
Target audience	Key users as automation engineers, system administrators as well as recipe designers	
Required qualifications	mandatory	optional
	Basic training	PAS-X MES formulas training PAS-X MES SCADA (OPC) MBR design training PAS-X MES SCADA (OPC) administration Training
Required equipment	Laptop	
Duration	1 day / 09:00 a.m. – 05:00 p.m.	
Language	English	
Certification valid for	2 years	
Training content	Introduction of MSI:	Message administration and MBR design:
	<ul style="list-style-type: none"> • Concept of Level 2 integration • Concept of message-based shopfloor integration • MSI adapter configuration • Communication monitoring as well as troubleshooting 	<ul style="list-style-type: none"> • Creation and administration of message • Recipe design and execution of Interface BF • Discussion and design of use cases

Available as



Recommended training for

- All Key Users
- MBR Designer
- MES Engineer
- Automation Engineer
- Project Manager

**Available from
V3.3.3 onwards**

PAS-X MES Minor Version Update		ETR-UP-3.X.X
Training objectives	<ul style="list-style-type: none"> • Knowledge of new functionalities implemented in a new PAS-X MES version • Understanding of the motivation, idea and concept of these functionalities 	
Target audience	Key users as recipe designers, supervisors and team leaders	
Required qualifications	mandatory	optional
	Knowledge of the system that is upgrade from	-
Required equipment	Laptop	
Duration	1 hour	
Language	English	
Certification valid for	2 years	
Training content	<ul style="list-style-type: none"> • New functionalities and features between two minor PAS-X versions are explained. • Only new features of the direct successor are explained (e.g. V3.3.5 to 3.4.0) • Available with market launch of the respective version 	

Available as



Recommended training for

- All Key Users
- MBR Designer
- MES Engineer
- Automation Engineer
- Project Manager

Recommended training for your migration journey

Available for V3.3 and V3.4

PAS-X MES Version Update		(E)TR-UP
Training objectives	<ul style="list-style-type: none"> • Knowledge of new functionalities implemented in PAS-X MES V3.3 / V3.4 compared to V3.1.8 • Understanding of the motivation, idea and concept of these functionalities 	
Target audience	PAS-X V3.1.8 users that want to gain a general understanding on new and changed functionalities	
Required qualifications	mandatory	optional
	Knowledge of PAS-X V3.1.8	-
Required equipment	Laptop	
Duration	1 day / 09:00 a.m. – 05:00 p.m.	
Language	English	
Certification valid for	2 years	
Training content	<p>The changes from PAS-X MES V3.1.8 to V3.3 or V3.4 are explained:</p> <ul style="list-style-type: none"> • System Access • Web User Interface • System-wide Settings • Master Data • Equipment Management • Master Batch Record • Electronic Batch Record • Warehouse Management System • PAS-X Cockpit • Infrastructure & Service Configurations 	

Available as



Recommended training for

- All Key Users
- MES Engineers
- MBR Designers

Recommended training for your migration journey



PAS-X MES Version Update for MES Engineers		TR-MES-UP			
Training objectives	<ul style="list-style-type: none"> • Introduction and detailed insights on changed Master Data, MBR design functionalities, Material Flow and EBR execution functionalities. • MES Engineers are empowered to get the most out of V3.3 / V3.4 in utilizing the new functionalities. • Using PAS-X in real life scenarios 				
Target audience	Experienced PAS-X V3.1.8 users				
Required qualifications	<p>mandatory</p> <p>Knowledge of PAS-X V3.1.8</p>	<p>optional</p> <p>–</p>			
Required equipment	Laptop				
Duration	4 days /09:00 a.m. – 05:00 p.m.				
Language	English				
Certification valid for	2 years				
Training content	<table border="0"> <tr> <td style="vertical-align: top;"> <p>New and changed functionality regarding:</p> <ul style="list-style-type: none"> • System Access • Web-UI • System wide settings <ul style="list-style-type: none"> • Lifecycle • Workflows • UoM Definitions • Master Data <ul style="list-style-type: none"> • Custom Attributes • Predefined Texts • Material Master Data • Production Units • CX Administration • Export/Import • EBR • WMS • PAS-X Cockpit </td> <td style="vertical-align: top;"> <ul style="list-style-type: none"> • Equipment management <ul style="list-style-type: none"> • Equipment Classes & Types • Administration of equipment items • State diagrams • Counter Definition • Material Compatibility rules • Equipment counter configuration • Equipment logbook • Import/Export of Equipment • Equipment usage and monitoring on the Shop floor </td> <td style="vertical-align: top;"> <ul style="list-style-type: none"> • MBR Administration <ul style="list-style-type: none"> • Overall Usability improvements • Header Data • Basic Operations • Basic Functions • Activities • Formula Functions • Material & Material Flow (MBR) <ul style="list-style-type: none"> • Master Data • Material Flow Setup • Quantification Types • Manufacturing Date • Reconciliation • Material Flow Basic Functions • Material in the EBR </td> </tr> </table>		<p>New and changed functionality regarding:</p> <ul style="list-style-type: none"> • System Access • Web-UI • System wide settings <ul style="list-style-type: none"> • Lifecycle • Workflows • UoM Definitions • Master Data <ul style="list-style-type: none"> • Custom Attributes • Predefined Texts • Material Master Data • Production Units • CX Administration • Export/Import • EBR • WMS • PAS-X Cockpit 	<ul style="list-style-type: none"> • Equipment management <ul style="list-style-type: none"> • Equipment Classes & Types • Administration of equipment items • State diagrams • Counter Definition • Material Compatibility rules • Equipment counter configuration • Equipment logbook • Import/Export of Equipment • Equipment usage and monitoring on the Shop floor 	<ul style="list-style-type: none"> • MBR Administration <ul style="list-style-type: none"> • Overall Usability improvements • Header Data • Basic Operations • Basic Functions • Activities • Formula Functions • Material & Material Flow (MBR) <ul style="list-style-type: none"> • Master Data • Material Flow Setup • Quantification Types • Manufacturing Date • Reconciliation • Material Flow Basic Functions • Material in the EBR
<p>New and changed functionality regarding:</p> <ul style="list-style-type: none"> • System Access • Web-UI • System wide settings <ul style="list-style-type: none"> • Lifecycle • Workflows • UoM Definitions • Master Data <ul style="list-style-type: none"> • Custom Attributes • Predefined Texts • Material Master Data • Production Units • CX Administration • Export/Import • EBR • WMS • PAS-X Cockpit 	<ul style="list-style-type: none"> • Equipment management <ul style="list-style-type: none"> • Equipment Classes & Types • Administration of equipment items • State diagrams • Counter Definition • Material Compatibility rules • Equipment counter configuration • Equipment logbook • Import/Export of Equipment • Equipment usage and monitoring on the Shop floor 	<ul style="list-style-type: none"> • MBR Administration <ul style="list-style-type: none"> • Overall Usability improvements • Header Data • Basic Operations • Basic Functions • Activities • Formula Functions • Material & Material Flow (MBR) <ul style="list-style-type: none"> • Master Data • Material Flow Setup • Quantification Types • Manufacturing Date • Reconciliation • Material Flow Basic Functions • Material in the EBR 			

Available as



Recommended training for

- All Key Users
- MES Engineers
- MBR Designers
- System Administrators

Recommended training for your migration journey



PAS-X MES Version Update for MES Engineers & System Administrators		TR-MES-SA-UP			
Training objectives	<ul style="list-style-type: none"> • Introduction and detailed insights on changed Master Data, MBR design functionalities, Material Flow and EBR execution functionalities. • Learning about System Administration relevant changes and functionalities • MES Engineers and System Administrators are empowered to get the most out of V3.3 / V3.4 in utilizing the new functionalities. • Using PAS-X in real life scenarios 				
Target audience	Experienced PAS-X V3.1.8 users				
Required qualifications	<p>mandatory</p> <p>Knowledge of PAS-X V3.1.8</p>	<p>optional</p> <p>–</p>			
Required equipment	Laptop				
Duration	5 days /09:00 a.m. – 05:00 p.m.				
Language	English				
Certification valid for	2 years				
Training content	<table border="0"> <tr> <td style="vertical-align: top;"> <p>New and changed functionality regarding:</p> <ul style="list-style-type: none"> • System Access • Web-UI • System wide settings <ul style="list-style-type: none"> • Lifecycle • Workflows • UoM Definitions • Master Data <ul style="list-style-type: none"> • Custom Attributes • Predefined Texts • Material Master Data • Production Units • CX Administration • Export/Import • EBR • WMS • PAS-X Cockpit • Equipment management <ul style="list-style-type: none"> • Equipment Classes & Types </td> <td style="vertical-align: top;"> <ul style="list-style-type: none"> • Administration of equipment items • State diagrams • Counter Definition • Material Compatibility rules • Equipment counter configuration • Equipment logbook • Import/Export of Equipment • Equipment usage on the Shop floor • MBR Administration <ul style="list-style-type: none"> • Overall Usability improvements • Header Data • Basic Operations • Basic Functions • Activities • Formula Functions </td> <td style="vertical-align: top;"> <ul style="list-style-type: none"> • Material & Material Flow (MBR) <ul style="list-style-type: none"> • Master Data • Material Flow Setup • Quantification Types • Manufacturing Date • Reconciliation • Material Flow Basic Functions • Material in the EBR • System Administration <ul style="list-style-type: none"> • Infrastructure and Architecture • Rights Management • Configuration <ul style="list-style-type: none"> • Terminal Management • Service Configuration • Setting up scales • ERP Interface Monitoring • Printing & Reporting </td> </tr> </table>		<p>New and changed functionality regarding:</p> <ul style="list-style-type: none"> • System Access • Web-UI • System wide settings <ul style="list-style-type: none"> • Lifecycle • Workflows • UoM Definitions • Master Data <ul style="list-style-type: none"> • Custom Attributes • Predefined Texts • Material Master Data • Production Units • CX Administration • Export/Import • EBR • WMS • PAS-X Cockpit • Equipment management <ul style="list-style-type: none"> • Equipment Classes & Types 	<ul style="list-style-type: none"> • Administration of equipment items • State diagrams • Counter Definition • Material Compatibility rules • Equipment counter configuration • Equipment logbook • Import/Export of Equipment • Equipment usage on the Shop floor • MBR Administration <ul style="list-style-type: none"> • Overall Usability improvements • Header Data • Basic Operations • Basic Functions • Activities • Formula Functions 	<ul style="list-style-type: none"> • Material & Material Flow (MBR) <ul style="list-style-type: none"> • Master Data • Material Flow Setup • Quantification Types • Manufacturing Date • Reconciliation • Material Flow Basic Functions • Material in the EBR • System Administration <ul style="list-style-type: none"> • Infrastructure and Architecture • Rights Management • Configuration <ul style="list-style-type: none"> • Terminal Management • Service Configuration • Setting up scales • ERP Interface Monitoring • Printing & Reporting
<p>New and changed functionality regarding:</p> <ul style="list-style-type: none"> • System Access • Web-UI • System wide settings <ul style="list-style-type: none"> • Lifecycle • Workflows • UoM Definitions • Master Data <ul style="list-style-type: none"> • Custom Attributes • Predefined Texts • Material Master Data • Production Units • CX Administration • Export/Import • EBR • WMS • PAS-X Cockpit • Equipment management <ul style="list-style-type: none"> • Equipment Classes & Types 	<ul style="list-style-type: none"> • Administration of equipment items • State diagrams • Counter Definition • Material Compatibility rules • Equipment counter configuration • Equipment logbook • Import/Export of Equipment • Equipment usage on the Shop floor • MBR Administration <ul style="list-style-type: none"> • Overall Usability improvements • Header Data • Basic Operations • Basic Functions • Activities • Formula Functions 	<ul style="list-style-type: none"> • Material & Material Flow (MBR) <ul style="list-style-type: none"> • Master Data • Material Flow Setup • Quantification Types • Manufacturing Date • Reconciliation • Material Flow Basic Functions • Material in the EBR • System Administration <ul style="list-style-type: none"> • Infrastructure and Architecture • Rights Management • Configuration <ul style="list-style-type: none"> • Terminal Management • Service Configuration • Setting up scales • ERP Interface Monitoring • Printing & Reporting 			

Available as



Recommended training for

- System Administrator
- MBR Designer
- MES Engineer

PAS-X MES System Administration		TR-ADMIN-SYS		
Training objectives	<ul style="list-style-type: none"> • Setting up, configuring and maintaining the PAS-X MES client system – the administrative perspective • Detailed knowledge of and skills in system administration of a PAS-X MES client environment • Using PAS-X MES in real-life scenarios 			
Target audience	Administrators of the PAS-X system.			
Required qualifications	mandatory	optional		
	–	Basic training		
Required equipment	Laptop			
Duration	2 days /09:00 a.m. – 05:00 p.m.			
Language	English			
Certification valid for	2 years			
Training content	<table border="0"> <tr> <td style="vertical-align: top;"> <p>System overview</p> <ul style="list-style-type: none"> • System architecture <p>User administration</p> <ul style="list-style-type: none"> • Management of users/user groups • Rights management <p>PAS-X MES GUI configuration</p> <p>Audit trail</p> <p>PAS-X MES printing/reporting</p> <ul style="list-style-type: none"> • Printing architecture • Printing configuration </td> <td style="vertical-align: top; border-left: 1px solid black;"> <p>System monitoring</p> <p>PAS-X MES communication</p> <ul style="list-style-type: none"> • ERP-interface – principles • Monitoring of the ERP interface <p>PAS-X MES client configuration</p> <ul style="list-style-type: none"> • Scale configuration • Client configuration </td> </tr> </table>		<p>System overview</p> <ul style="list-style-type: none"> • System architecture <p>User administration</p> <ul style="list-style-type: none"> • Management of users/user groups • Rights management <p>PAS-X MES GUI configuration</p> <p>Audit trail</p> <p>PAS-X MES printing/reporting</p> <ul style="list-style-type: none"> • Printing architecture • Printing configuration 	<p>System monitoring</p> <p>PAS-X MES communication</p> <ul style="list-style-type: none"> • ERP-interface – principles • Monitoring of the ERP interface <p>PAS-X MES client configuration</p> <ul style="list-style-type: none"> • Scale configuration • Client configuration
<p>System overview</p> <ul style="list-style-type: none"> • System architecture <p>User administration</p> <ul style="list-style-type: none"> • Management of users/user groups • Rights management <p>PAS-X MES GUI configuration</p> <p>Audit trail</p> <p>PAS-X MES printing/reporting</p> <ul style="list-style-type: none"> • Printing architecture • Printing configuration 	<p>System monitoring</p> <p>PAS-X MES communication</p> <ul style="list-style-type: none"> • ERP-interface – principles • Monitoring of the ERP interface <p>PAS-X MES client configuration</p> <ul style="list-style-type: none"> • Scale configuration • Client configuration 			

Available as



Recommended training for

- MBR Designer
- MES Engineer
- Project Manager

PAS-X MES SCADA Administration		TR-ADMIN-SCADA
Training objectives	<ul style="list-style-type: none"> • Setting up, configuring and maintaining the PAS-X MES client system – the administrative perspective • Detailed knowledge of and skills in setting up and connecting PAS-X MES to external systems for automatic data exchange (Scada, DCS) 	
Target audience	Key users as automation engineers, system administrators as well as recipe designers.	
Required qualifications	mandatory –	optional Basic training
Required equipment	Laptop	
Duration	2 days /09:00 a.m. – 05:00 p.m.	
Language	English	
Certification valid for	2 years	
Training content	Introduction to SCADA (OPC) Integration <ul style="list-style-type: none"> • Concepts of process control integration (PCS) • PCS system setup • Communication monitoring within PAS-X MES 	PCS MBR elements <ul style="list-style-type: none"> • Setup of PCS MBR elements • PCS recipe information within PAS-X MES • Concept and usage of aliasing • Configuration of state machines • Synchronization of level 2 systems and PAS-X MES • Using state mapping to drive state transitions • Authoring of PCS MBR elements • Recipe execution with PCS MBR elements

Available as



Recommended training for

- Label Designer

PAS-X MES Reports & Labels Administration		TR-ADMIN-REP		
Training objectives	<ul style="list-style-type: none"> • Setting up, configuring and maintaining the PAS-X MES client system – the administrative perspective • Detailed knowledge of and skills in setting up and configuring the report management in PAS-X MES, including Crystal Reports and related SQL queries • Using PAS-X in real-life scenarios 			
Target audience	Administrators of the PAS-X MES system.			
Required qualifications	mandatory –	optional Basic training		
Required equipment	Laptop			
Duration	2 days /09:00 a.m. – 05:00 p.m.			
Language	English			
Certification valid for	2 years			
Training content	<table border="0"> <tr> <td style="vertical-align: top;"> <p>Introduction</p> <ul style="list-style-type: none"> • Basics of reporting • Using SQL • Basics of crystal report <p>Label design</p> <ul style="list-style-type: none"> • Data model for labels • Label design with crystal report • Printing configuration </td> <td style="vertical-align: top; border-left: 1px solid black;"> <p>Batch Record Report</p> <ul style="list-style-type: none"> • Data model for batch report • Batch Record Report design • Printing configuration </td> </tr> </table>		<p>Introduction</p> <ul style="list-style-type: none"> • Basics of reporting • Using SQL • Basics of crystal report <p>Label design</p> <ul style="list-style-type: none"> • Data model for labels • Label design with crystal report • Printing configuration 	<p>Batch Record Report</p> <ul style="list-style-type: none"> • Data model for batch report • Batch Record Report design • Printing configuration
<p>Introduction</p> <ul style="list-style-type: none"> • Basics of reporting • Using SQL • Basics of crystal report <p>Label design</p> <ul style="list-style-type: none"> • Data model for labels • Label design with crystal report • Printing configuration 	<p>Batch Record Report</p> <ul style="list-style-type: none"> • Data model for batch report • Batch Record Report design • Printing configuration 			

Available as



Recommended training for

- System Administrators

PAS-X MES Monitoring Basic		ETR-BAS-MONI
Training objectives	<ul style="list-style-type: none">• Detailed knowledge of and skills in using the Monitoring Tool• Enablement for troubleshooting and configuring the Tool	
Target audience	Administrators of the PAS-X system.	
Required qualifications	Basic understanding of PAS-X MES.	
Required equipment	Laptop	
Duration	2 hours	
Language	English	
Certification valid for	2 years	
Training content	Monitoring Basic Training <ul style="list-style-type: none">• Introduction to the PAS-X Monitoring Tool• User management and rights assignment• Configuring nodes and sensors• Alert configuration• Handling alerts and errors• Visualizing collected data• Analyzing information based on scenarios	

PAS-X MES Additional trainings



Available as



Recommended training for

- All Software Key Users

PAS-X MES Track & Trace Basic		TR-FP-TT
Training objectives	<ul style="list-style-type: none"> • Detailed knowledge of and skills in setting up, configuring and using the Track & Trace software • Using Track & Trace in real-life scenarios 	
Target audience	Key users as team leaders and production leads.	
Required qualifications	mandatory -	optional -
Required equipment	Laptop	
Duration	1 day / 09:00 a.m. – 05:00 p.m.	
Language	English	
Certification valid for	2 years	
Training content	<ul style="list-style-type: none"> • Concept of serialization • PAS-X Track & Trace – features and architecture • User interface • Dialog overview • Process order workflow 	

Available as



Recommended training for

- All Software Key Users
- Administrators

PAS-X MES Track & Trace Administration		TR-ADMIN-TT
Training objectives	<ul style="list-style-type: none"> • Setting up, configuring and maintaining the PAS-X MES client system – the administrative perspective • Detailed knowledge of and skills in setting up and connecting PAS-X MES Track & Trace and line controller as well as configuring and monitoring the connection • Using PAS-X MES X in real-life scenarios 	
Target audience	Administrators of the PAS-X system.	
Required qualifications	mandatory –	optional Basic training
Required equipment	Laptop	
Duration	1 day / 09:00 a.m. – 05:00 p.m.	
Language	English	
Certification valid for	2 years	
Training content	<ul style="list-style-type: none"> • Configuration • User/Rights management • Audit trail • Control data • Background processes • Monitoring • Interfaces 	

Available as



Recommended training for

- All Software Key Users

PAS-X Savvy Basic					
Training objectives	<ul style="list-style-type: none"> • Navigation within PAS-X Savvy • General understanding of the functionality and usability of PAS-X Savvy • Data Visualization and Data Analysis approaches of my data • Result Reporting and Collaboration in PAS-X Savvy 				
Target audience	All users which are going to work with PAS-X Savvy, any roles.				
Required qualifications	<table border="1"> <thead> <tr> <th>mandatory</th> <th>optional</th> </tr> </thead> <tbody> <tr> <td>-</td> <td>-</td> </tr> </tbody> </table>	mandatory	optional	-	-
mandatory	optional				
-	-				
Required equipment	Laptop				
Duration	4 hours				
Language	English				
Certification valid for	2 years				
Training content	<ul style="list-style-type: none"> • Savvy Introduction • Savvy Glossary • Navigation within PAS-X Savvy • Filtering and finding the required data • Data Visualization • Data Analysis • Result Reporting 				

Available as



Recommended training for

- All Software Key Users
- Administrators

PAS-X Savvy Administration	
Training objectives	<ul style="list-style-type: none"> • Detailed knowledge of PAS-X Savvy administration • Tracking data import and troubleshooting • User and access management
Target audience	Core users, team leaders and process experts.
Required qualifications	mandatory
	PAS-X Savvy Basic training
Required equipment	Laptop
Duration	3 hours
Language	English
Certification valid for	2 years
Training content	<ul style="list-style-type: none"> • Access and Navigation in PAS-X Savvy Administration • Tracking data import and how to troubleshoot • Global System Settings • User Groups and User Management

Available as



Recommended training for

- Software Product Managers
- Data Scientists
- Programmers

PAS-X Savvy Programming	
Training objectives	<ul style="list-style-type: none"> • Python programming in PAS-X Savvy • Develop your own Algorithm • Develop your own GUI
Target audience	Data Scientist, Data Analysts
Required qualifications	mandatory
	Python 3 (Numpy, Pandas, Ploty, statsmodel, Scipy)
	optional
	SQL, REST API
Required equipment	Laptop
Duration	4 – 8 hours
Language	English
Certification valid for	2 years
Training content	<p>Depending on request</p> <ul style="list-style-type: none"> • Introduction and using of Python API in PAS-X Savvy • Develop your own algorithm • Building a GUI to make developed algorithms accessible to other users • Sustainable algorithm development in PAS-X Savvy • Introduction of Savvy Python functions

PAS-X MES End user trainings

End User – Personnel tasked to operate the system in their daily work based on the Key User's setup

Available as



Recommended training for

- Shop Floor Operator
- Manufacturing Supervisor
- Shop Floor QA

PAS-X MES Basic for End User		ETR-EUT-BAS				
Training objectives	<ul style="list-style-type: none"> • Learn about main functions of PAS-X MES • Learn how to access the system and search for relevant information 					
Target audience	End users as Operator, Project Manager, QA, MBR Designer, System Administrator.					
Required qualifications	<table border="1"> <thead> <tr> <th>mandatory</th> <th>optional</th> </tr> </thead> <tbody> <tr> <td>-</td> <td>-</td> </tr> </tbody> </table>	mandatory	optional	-	-	
mandatory	optional					
-	-					
Required equipment	Laptop					
Duration	1 hour					
Language	English, Danish					
Certification valid for	2 years					
Training content	<p>Basic for End User</p> <ul style="list-style-type: none"> • PAS-X Concept • Overview and key features of a MES • Access to the System • User Interface and Dialogs • Filters and Relevant Information in the System • PAS-X Demonstration 					

Available as



Recommended training for

- Shop Floor Operator
- Manufacturing Supervisor
- Shop Floor QA

PAS-X MES Electronic Batch Record Execution for End User		ETR-EUT-EBR
Training objectives	<ul style="list-style-type: none"> • How to create Manufacturing Orders with their according Shop Floor Orders which trigger the execution of an Electronic Batch Record. • How to execute Shop Floor Orders 	
Target audience	End users as Operator, Project Manager, QA, MBR Designer, System Administrator.	
Required qualifications	mandatory	optional
	Basic for End User	-
Required equipment	Laptop	
Duration	1 hour	
Language	English, Danish	
Certification valid for	2 years	
Training content	<p>Electronic Batch Record Execution</p> <ul style="list-style-type: none"> • Introduction to Electronic Batch Records • Manufacturing Orders • Shop Floor Orders • PAS-X System Demonstration & Practical Exercise 	

Available as



Recommended training for

- Shop Floor Operator
- Manufacturing Supervisor
- Shop Floor QA

PAS-X MES Batch Record Review and Approval for End User		ETR-EUT-BBR
Training objectives	<ul style="list-style-type: none"> • Detailed overview of Batch Records and the review process • How is a Batch record created and what steps are necessary in order to release it • How to navigate within the Intry to process approval tasks 	
Target audience	End users as Operator, Project Manager, QA, MBR Designer, System Administrator.	
Required qualifications	mandatory	optional
	Basic for End User	-
Required equipment	Laptop	
Duration	1 hour	
Language	English, Danish	
Certification valid for	2 years	
Training content	<p>Batch Record Review and Approval</p> <ul style="list-style-type: none"> • Finishing of Manufacturing & Shop Floor Orders • Batch Records • Exceptions • External Documents • Batch Record Review • Approval Workflow • PAS-X Demonstration 	

Available as



Recommended training for

- Shop Floor Operator
- Manufacturing Supervisor
- Shop Floor QA
- MBR Designer

PAS-X MES MBR Design for End User		ETR-EUT-MBR
Training objectives	<ul style="list-style-type: none"> • Entry point to start and understand MBR design • Learn about the core functionality and processes related to the MBR design process on a high level without in-depth knowledge 	
Target audience	End users as Operator, Project Manager, QA, MBR Designer, System Administrator.	
Required qualifications	mandatory	optional
	Basic for End User	-
Required equipment	Laptop	
Duration	1 hour	
Language	English, Danish	
Certification valid for	2 years	
Training content	<p>MBR Designer</p> <ul style="list-style-type: none"> • Explain what a Master Batch Record (MBR) is • Define the structure of an MBR • Use the MBR designer to create an MBR • Understand equipment use in an MBR • Understand Material Flow in an MBR 	

Instructor-led training schedule

Americas 2026

February

Basic	
02–04	🇺🇸 Remote, USA
System Administration	
05–06	🇺🇸 Remote, USA
Professional Library Elements & GMBR	
09	🇺🇸 Remote, USA
Professional MBR Design	
10	🇺🇸 Remote, USA
Professional Material Flow	
11	🇺🇸 Remote, USA
Professional Formulas	
12	🇺🇸 Remote, USA
Professional Characteristics (CX)	
13	🇺🇸 Remote, USA

March

Basic	
16–18	🇺🇸 Remote, USA
System Administration	
19–20	🇺🇸 Remote, USA
Professional Library Elements & GMBR	
23	🇺🇸 Remote, USA
Professional EQ Management	
24	🇺🇸 Remote, USA
Professional Material Flow	
25	🇺🇸 Remote, USA
Professional Formulas	
26	🇺🇸 Remote, USA
Professional Characteristics (CX)	
27	🇺🇸 Remote, USA

May

Basic	
04–06	🇺🇸 Apex, NC, USA
System Administration	
07–08	🇺🇸 Apex, NC, USA
Update Training for MES Engineers	
11–14	🇺🇸 Apex, NC, USA
Update Training for MES Engineers	
System Administration	
15	🇺🇸 Apex, NC, USA
Reports & Labels Administration	
19–20	🇺🇸 Apex, NC, USA
Professional ERP Integration	
21	🇺🇸 Apex, NC, USA

July

Basic	
13–15	🇺🇸 Remote, USA
System Administration	
16–17	🇺🇸 Remote, USA
Update Training for MES Engineers	
20–23	🇺🇸 Remote, USA
Update Training for MES Engineers	
System Administration	
24	🇺🇸 Remote, USA

September

Basic	
14–16	🇺🇸 Apex, NC, USA
System Administration	
17–18	🇺🇸 Apex, NC, USA
Professional Library Elements & GMBR	
21	🇺🇸 Apex, NC, USA
Professional EQ Management	
22	🇺🇸 Apex, NC, USA
Professional Material Flow	
23	🇺🇸 Apex, NC, USA
Professional Formulas	
24	🇺🇸 Apex, NC, USA
Professional Characteristics (CX)	
25	🇺🇸 Apex, NC, USA
SCADA Administration	
29–30	🇺🇸 Apex, NC, USA

October

Professional MSI	
01	🇺🇸 Apex, NC, USA
SCADA Professional MBR Design	
02	🇺🇸 Apex, NC, USA

November

Basic	
02–04	🇺🇸 Apex, NC, USA
System Administration	
05–06	🇺🇸 Apex, NC, USA
Professional Library Elements & GMBR	
09	🇺🇸 Apex, NC, USA
Professional EQ Management	
10	🇺🇸 Apex, NC, USA
Professional Material Flow	
11	🇺🇸 Apex, NC, USA
Professional Formulas	
12	🇺🇸 Apex, NC, USA
Professional Characteristics (CX)	
13	🇺🇸 Apex, NC, USA

Training courses:

PAS-X V3.1.8
 PAS-X V3.1.8 to V3.4
 PAS-X V3.4

Instructor-led training schedule

Asia 2026

May

Update Training for MES Engineers	
11-14	● Tokyo, Japan
Update Training for MES Engineers System Administration	
15	● Tokyo, Japan
Basic	
18-20	● Tokyo, Japan
Professional Material Flow	
21	● Tokyo, Japan
Professional EQ Management	
22	● Tokyo, Japan
Professional Formulas	
25	● Tokyo, Japan
Professional Characteristics (CX)	
26	● Tokyo, Japan
Professional MBR Design	
27	● Tokyo, Japan
Professional Library Elements & GMBR	
28	● Tokyo, Japan

June

System Administration	
04-05	● Tokyo, Japan
Update Training for MES Engineers	
08-11	● India ● Remote
Update Training for MES Engineers System Administration	
12	● India ● Remote

June/July

Basic	
29 Jun-01 Jul	● India ● Remote
Professional Material Flow	
02	● India ● Remote
Professional EQ Management	
03	● India ● Remote
Professional Formulas	
06	● India ● Remote
Professional Characteristics (CX)	
07	● India ● Remote
Professional MBR Design	
08	● India ● Remote
Professional Library Elements & GMBR	
09	● India ● Remote
System Administration	
13-14	● India
Professional ERP Integration	
15	● India

October

Update Training for MES Engineers	
05-08	● Tokyo, Japan
Update Training for MES Engineers System Administration	
09	● Tokyo, Japan
Basic	
14-16	● Tokyo, Japan
Professional Material Flow	
19	● Tokyo, Japan
Professional EQ Management	
20	● Tokyo, Japan
Professional Formulas	
21	● Tokyo, Japan
Professional Characteristics (CX)	
22	● Tokyo, Japan
Professional MBR Design	
26	● Tokyo, Japan
Professional Library Elements & GMBR	
27	● Tokyo, Japan
System Administration	
28-29	● Tokyo, Japan

November

Update Training for MES Engineers	
02-05	● India ● Remote
Update Training for MES Engineers System Administration	
06	● India ● Remote
Basic	
16-18	● India ● Remote
Professional Material Flow	
19	● India ● Remote
Professional EQ Management	
20	● India ● Remote
Professional Formulas	
23	● India ● Remote
Professional Characteristics (CX)	
24	● India ● Remote
Professional MBR Design	
25	● India ● Remote
Professional Library Elements & GMBR	
26	● India ● Remote

December

System Administration	
03-04	● India ● Remote

Training courses:
 PAS-X V3.1.8 to V3.4
 PAS-X V3.4

Instructor-led training schedule

Europe 2026

February

Basic	
09–11	Lüneburg, Germany
Professional ERP Integration	
12	Lüneburg, Germany
Professional MBR Design	
13	Lüneburg, Germany
Professional Library Elements & GMBR	
16	Lüneburg, Germany
Professional EQ Management	
17	Lüneburg, Germany
Professional Material Flow	
18	Lüneburg, Germany
Professional Formulas	
19	Lüneburg, Germany
Professional Characteristics (CX)	
20	Lüneburg, Germany
System Administration	
23–24	Lüneburg, Germany

March

Update Training for MES Engineers	
02–05	Lüneburg, Germany
Update Training for MES Engineers	
System Administration	
06	Lüneburg, Germany

April

Basic	
13–15	Remote, Ireland
Professional ERP Integration	
16	Remote, Ireland
Professional MBR Design	
17	Remote, Ireland
Professional Library Elements & GMBR	
20	Remote, Ireland
Professional EQ Management	
21	Remote, Ireland
Professional Material Flow	
22	Remote, Ireland
Professional Formulas	
23	Remote, Ireland
Professional Characteristics (CX)	
24	Remote, Ireland
System Administration	
27–28	Remote, Ireland

June

Basic	
15–17	Lüneburg, Germany
Professional ERP Integration	
18	Lüneburg, Germany
Professional MBR Design	
19	Lüneburg, Germany
Professional Library Elements & GMBR	
22	Lüneburg, Germany
Professional EQ Management	
23	Lüneburg, Germany
Professional Material Flow	
24	Lüneburg, Germany
Professional Formulas	
25	Lüneburg, Germany
Professional Order Network & CX	
26	Lüneburg, Germany
System Administration	
29–30	Lüneburg, Germany

August/September

Basic	
31 Aug–02 Sep	Remote, Ireland
Professional ERP Integration	
03	Remote, Ireland
Professional MBR Design	
04	Remote, Ireland
Professional Library Elements & GMBR	
07	Remote, Ireland
Professional EQ Management	
08	Remote, Ireland
Professional Material Flow	
09	Remote, Ireland
Professional Formulas	
10	Remote, Ireland
Professional Characteristics (CX)	
11	Remote, Ireland
System Administration	
14–15	Remote, Ireland

October

Update Training for MES Engineers	
05–08	Lüneburg, Germany
Update Training for MES Engineers	
System Administration	
09	Lüneburg, Germany

November

Basic	
16–18	Lüneburg, Germany
Professional ERP Integration	
19	Lüneburg, Germany
Professional MBR Design	
20	Lüneburg, Germany
Professional Library Elements & GMBR	
23	Lüneburg, Germany
Professional EQ Management	
24	Lüneburg, Germany
Professional Material Flow	
25	Lüneburg, Germany
Professional Formulas	
26	Lüneburg, Germany
Professional Characteristics (CX)	
27	Lüneburg, Germany
System Administration	
30–01 Dec	Lüneburg, Germany

Training courses:
 PAS-X V3.1.8 to V3.4
 PAS-X V3.4

Blended Basic training schedule

Europe 2026

January
Blended Basic
23  Remote, Germany

February
Blended Basic
27  Remote, Germany

March
Blended Basic
27  Remote, Germany

April
Blended Basic
30  Remote, Germany

May
Blended Basic
29  Remote, Germany

July
Blended Basic
03  Remote, Germany

August
Blended Basic
14  Remote, Germany

September
Blended Basic
18  Remote, Germany

October
Blended Basic
30  Remote, Germany

December
Blended Basic
04  Remote, Germany

Training courses:
[PAS-X V3.4](#)

Your PAS-X MES training team



Well-trained and qualified users thanks to our experienced subject matter experts.

Germany



Sarah Zimmer
Head of Business Consulting

Language: English, German



Svenja Griewaldt
Manager Training

Language: English, German



Ana de la Rosa Bosch
Associate Trainer

Language: English



Rana Mousa
Manager End User Training

Language: English, German



Michel Eberhardt
Senior Trainer

Language: English, German



Michael Hentschel
Consultant & Trainer

Language: English, German



Philipp Bochert
Senior Trainer

Language: English, German



Tomas Lenton
Senior Trainer

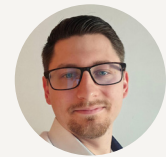
Language: English

Your PAS-X MES training team

Well-trained and qualified users thanks to our experienced subject matter experts.



Ireland



Lukasz Michulec
Senior Consultant – Team Lead

Language: English, Polish



Kamil Prus
Senior Trainer

Language: English, Polish



Ailish Gillespie
Manager Business Consulting

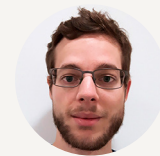
Language: English

France



Alexis Rouquette
Senior Consultant

Language: French, English



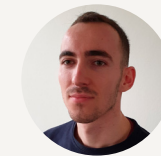
Jérémy Doré
Consultant

Language: French, English



Javier Heras
Senior Consultant

Language: English, Spanish, Catalan



Louis Delaplace
Consultant

Language: French, English

Your PAS-X MES training team



Well-trained and qualified users thanks to our experienced subject matter experts.

North America



Kristi Korson
Head of Training

Language: English



Brandon Gabany
Senior Trainer

Language: English



Keri Murphy
Senior Trainer

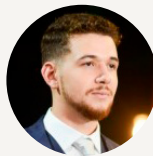
Language: English

Latin America



Marcio Vilas Boas
Trainer & Senior Consultant

Language: English, Portuguese-BR,
Spanish



Flávio Silva
Trainer & Consultant

Language: English, Portuguese-BR,
Spanish



Cayo Guiné
Trainer & Consultant

Language: English, Portuguese-BR

Your PAS-X MES training team



Well-trained and qualified users thanks to our experienced subject matter experts.

Thailand



Sariya Dechamethakun (Gig)
Consultant & Trainer

Language: English, Thai, Japanese



Dhanawij Tangjaturonrasme (Boom)
Consultant & Trainer

Language: English, Thai



Supicha Kumsoy (Sue)
Consultant & Trainer

Language: English, Thai

China



Amy Wang
Senior Consultant & Trainer

Language: English, Mandarin



Dara Wang
Trainer & Project Engineer

Language: English, Mandarin

India



Manish Kumar
Senior Deployment Engineer
Project Management & Deployment
and Trainer

Language: English, Hindi



Rafhat Shaikh
Associate Lead Trainer Business
Consulting & Architecture

Language: English, Hindi



Akanksha Vibhute
Project Engineer Business
Consulting & Architecture and Trainer

Language: English, Hindi



S Sriram
Project Engineer Business
Consulting & Architecture and Trainer

Language: English, Hindi

Your PAS-X MES training team

Well-trained and qualified users thanks to our experienced subject matter experts.



Japan



Martin Brillowski
General Manager

Language: English, German



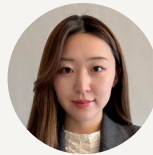
Shuei Matsuda
MES Consultant & Trainer

Language: English, Japanese



Takanobu Amano
Trainer & MES
Consultant

Language: English, Japanese



Nanami Taniguchi
MES Consultant & Trainer

Language: English, Japanese



Eiji Miyamoto
MES Consultant & Trainer

Language: English, Japanese

Our locations

